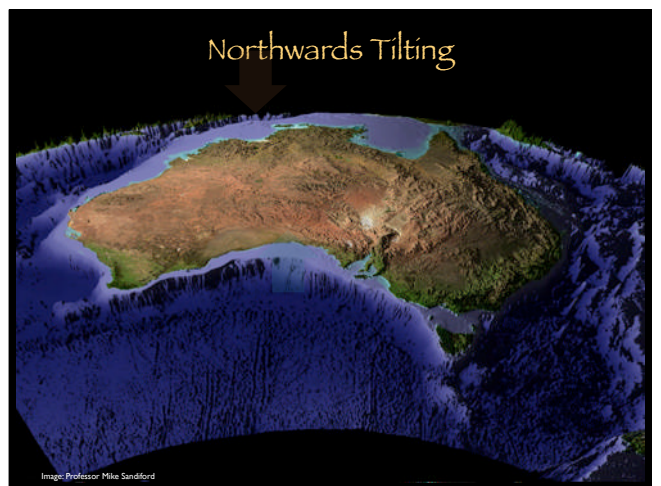
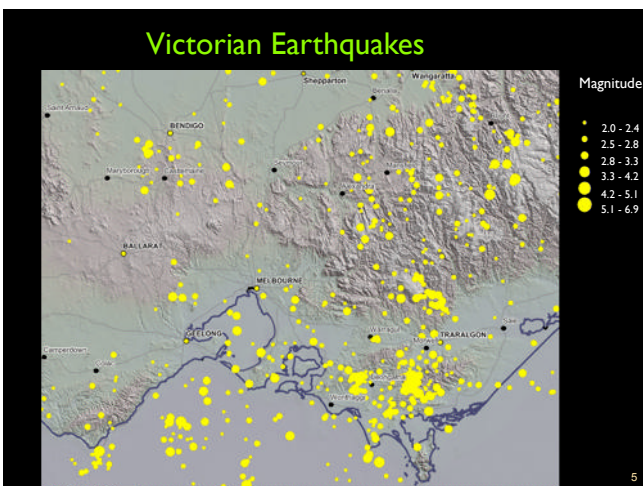
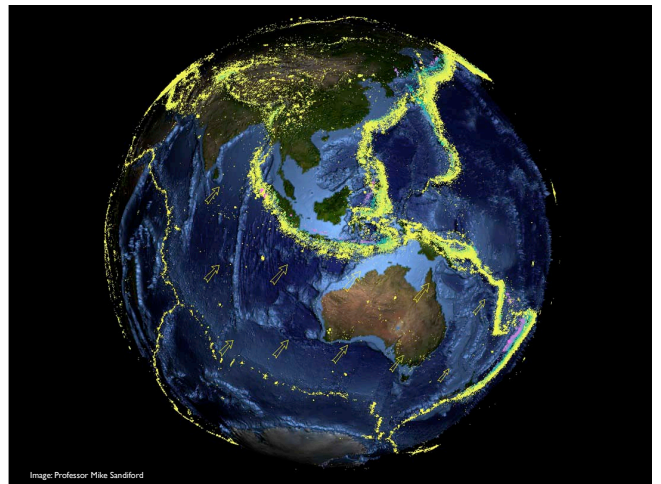
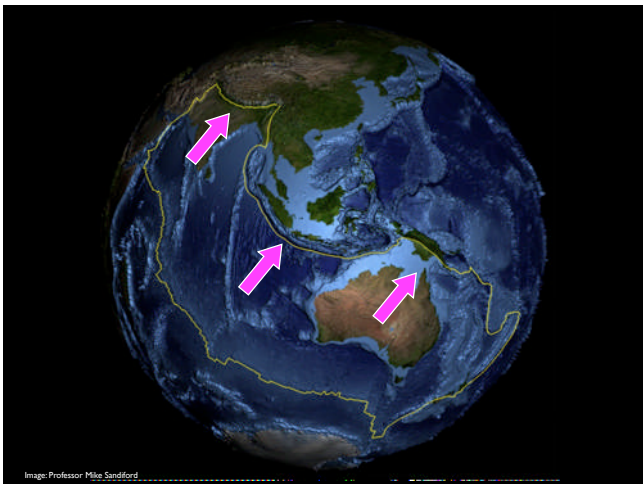
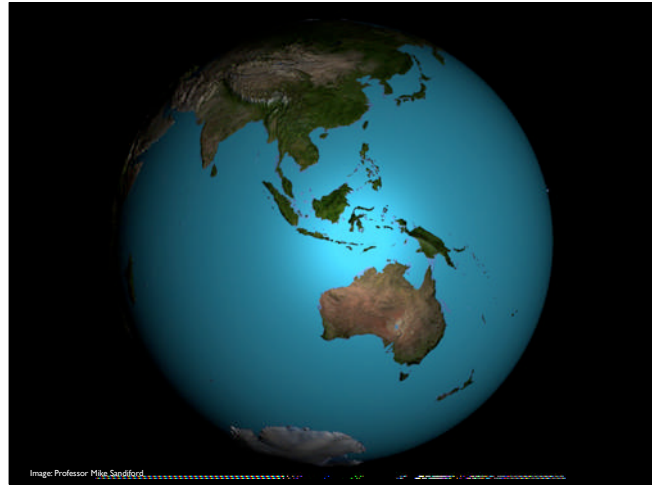


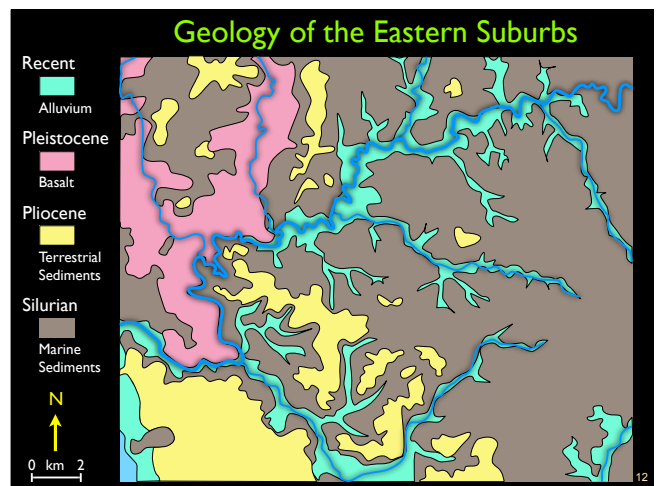
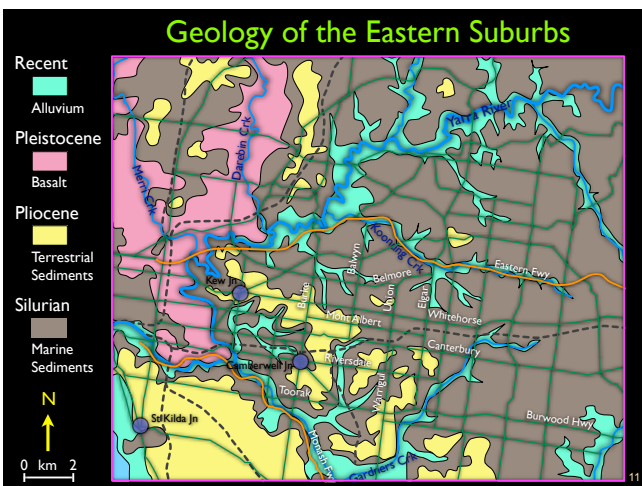
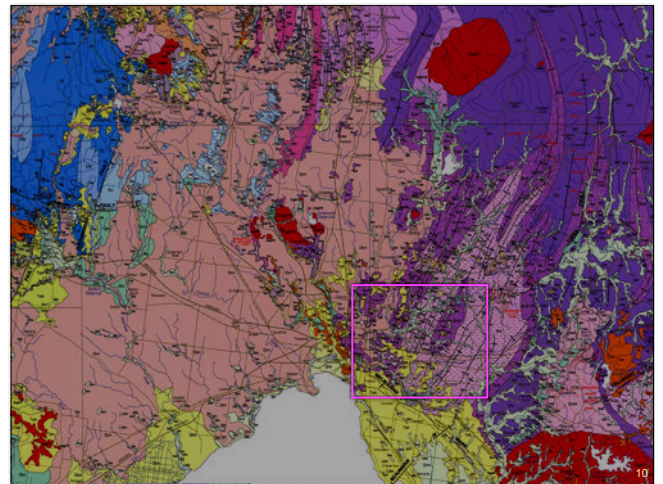
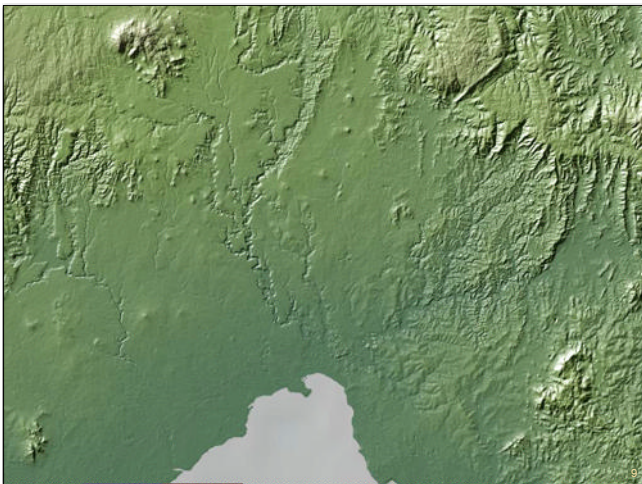
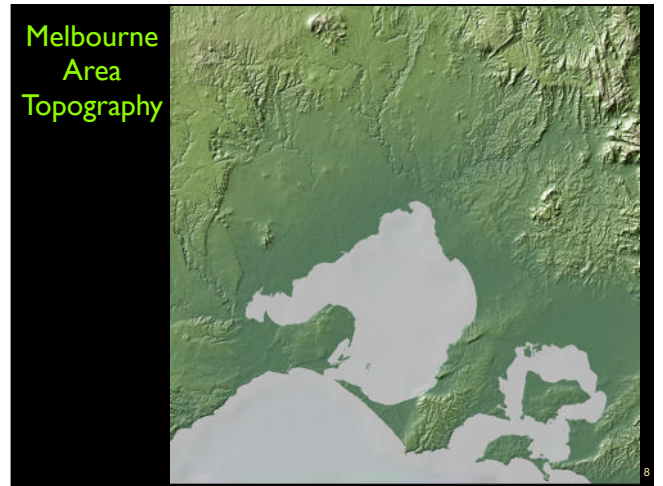
*School of Earth Sciences*

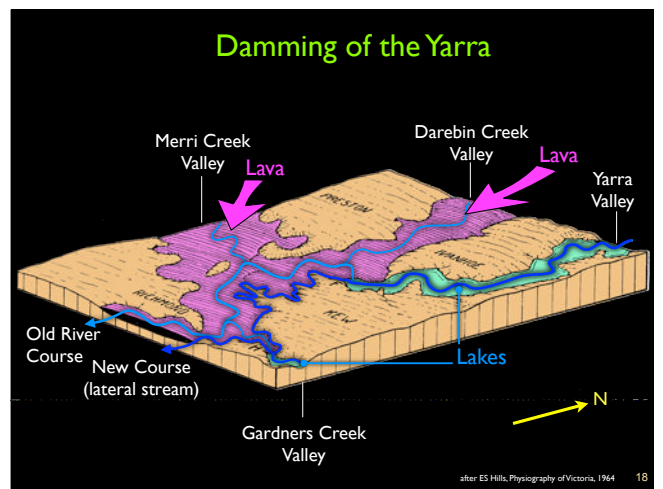


**The geology and landscape of the Melbourne Region**

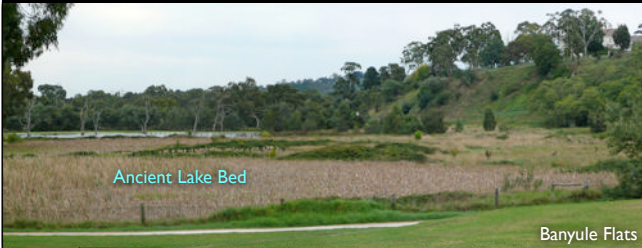
Prof Andrew Gleadow







## Yarra River Flats, Heidelberg



19

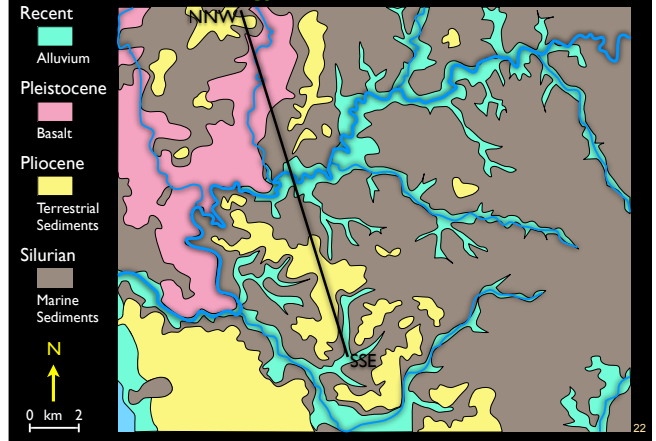
## Yarra River Valley, Burnley



20

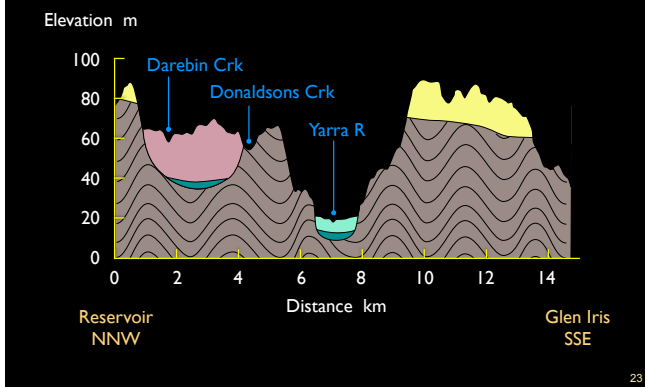


## Geology of the Eastern Suburbs



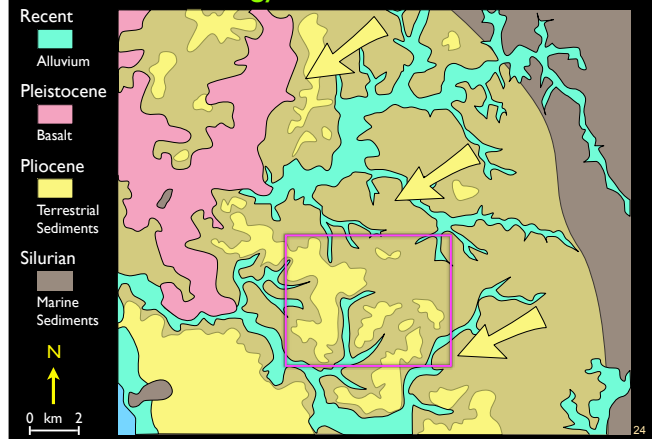
22

## Geological Cross-Section



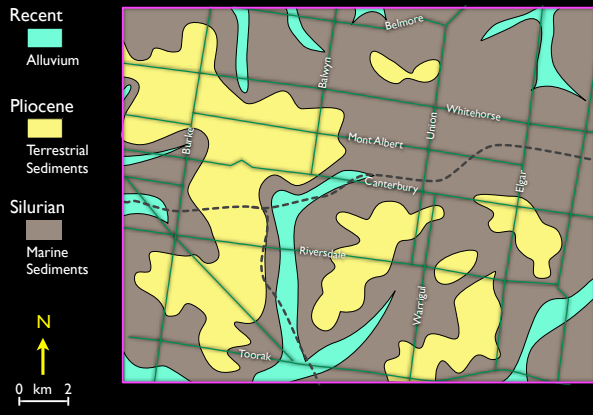
23

## Geology of the Eastern Suburbs



24

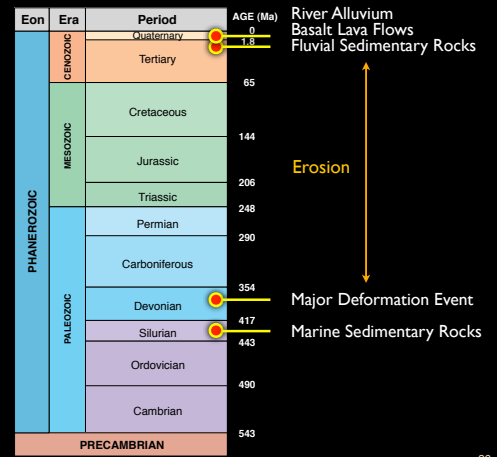
## Geology of Surrey Hills



25

## Geological Time Scale

● ROCKS IN MELBOURNE



26